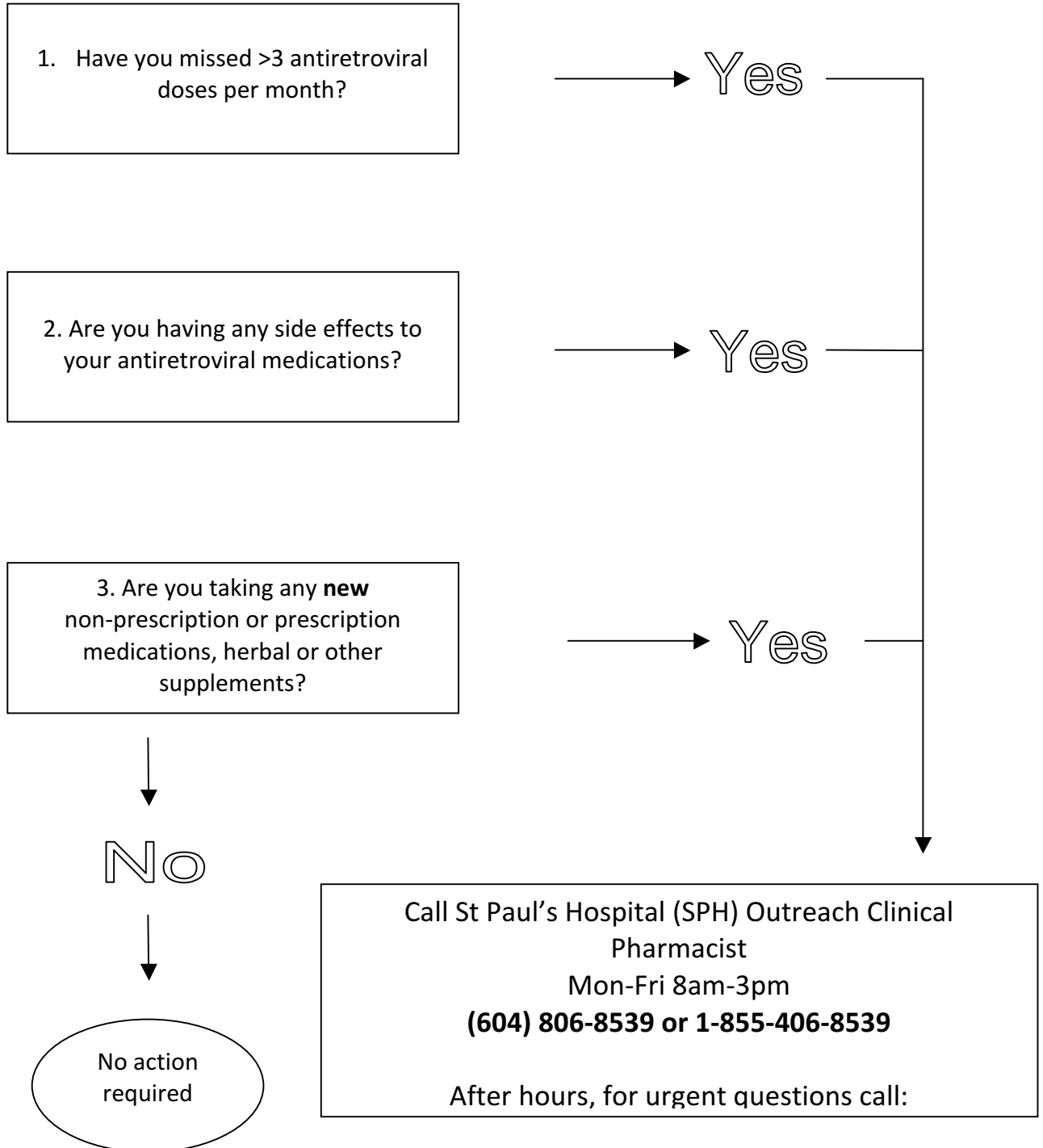




Antiretroviral Medication Pick-up

RAPID SCREEN FOR DRUG THERAPY PROBLEMS

At the time of medication pick up, please ask the patient:





Supplemental Information

ANTIRETROVIRAL (ARV) CLINICAL FOLLOW-UP FLOW SHEET

1. Adherence

ASK patient: "how many doses missed since last pick-up?"

Frequency of missed doses	Risk of losing efficacy	Management
2-3 times per MONTH	Low	<ul style="list-style-type: none"> • Due to adverse effects? Refer to SPH Outreach Clinical Pharmacist • Encourage adherence, use reminders or supports if needed
1 time per WEEK	Moderate	<ul style="list-style-type: none"> • Due to adverse effects? Refer to SPH Outreach Clinical Pharmacist • Encourage adherence, use reminders or supports if needed • Notify SPH Pharmacist for in-depth counseling
>1 time per WEEK, or >2 days consecutively every few weeks	High	<ul style="list-style-type: none"> • Ask the patient if SPH can contact them for discussion • Notify SPH Outreach Clinical Pharmacist for in-depth counseling or guidance on having discussion with patient

2. Adverse effects

ASK patient: Have you had any changes to your health since starting this medication?

- Majority are gastrointestinal related and should subside by 2-3 weeks.
- Support patient with relief medications as needed (e.g. Gravol®, loperamide)
- If severe side effects, discuss with SPH Outreach Clinical Pharmacist about how to safely discontinue ARVs if needed and other management strategies

3. Drug interactions

ASK patient: Any new medications, non-prescription, herbal medications or other supplements?

Preferred drug interaction websites for ARVs – (check two sources)

<http://www.hiv-druginteractions.org/>

app.hivclinic.ca

<http://arv.ucsf.edu/insite>



General principles:

ARVs that may INCREASE effects of OTHER medications

- Ritonavir = STRONG INHIBITOR of *most* P450 isoenzymes
- Cobicistat = STRONG INHIBITOR of CYP 3A4

ARVs that may DECREASE effects of OTHER medications

- Ritonavir = weak/moderate INDUCER of CYP 1A2, glucuronidation
- Efavirenz = STRONG INDUCER of CYP 3A4 (but can inhibit some enzymes)
- Nevirapine = STRONG INDUCER of CYP 3A4
- Etravirine = Moderate INDUCER of CYP 3A4

OTHER medications can affect ARV levels

- CYP inducers and inhibitors (e.g. anticonvulsants, rifampin, etc): affects most ARVs
- Polyvalent cations: bind to integrase inhibitors (bictegravir, dolutegravir, elvitegravir, raltegravir)
 - Management varies by agent
- Medications that reduce stomach acid: rilpivirine, atazanavir
 - Management varies by agent

Contact the St. Paul's HIV Outreach Clinical Pharmacist:

Any questions or concerns please contact us.

Phone: 1-855-406-8539 or 604-806-8539

Fax: 604-806-8255

After hours on call: 1-888-511-6222